

# PRODUCT INFORMATION PACKET

Model No: 5KC49HN2509

Catalog No: C1814

0.50 HP Explosion Proof Motor, 1 phase, 3600 RPM, 115/208-230 V, 56J Frame, EPFC  
Explosion Proof NEMA Motors



Regal and Marathon are trademarks of Regal Beloit Corporation or one of its affiliated companies.  
©2020 Regal Beloit Corporation, All Rights Reserved. MC017097E

**REGAL**



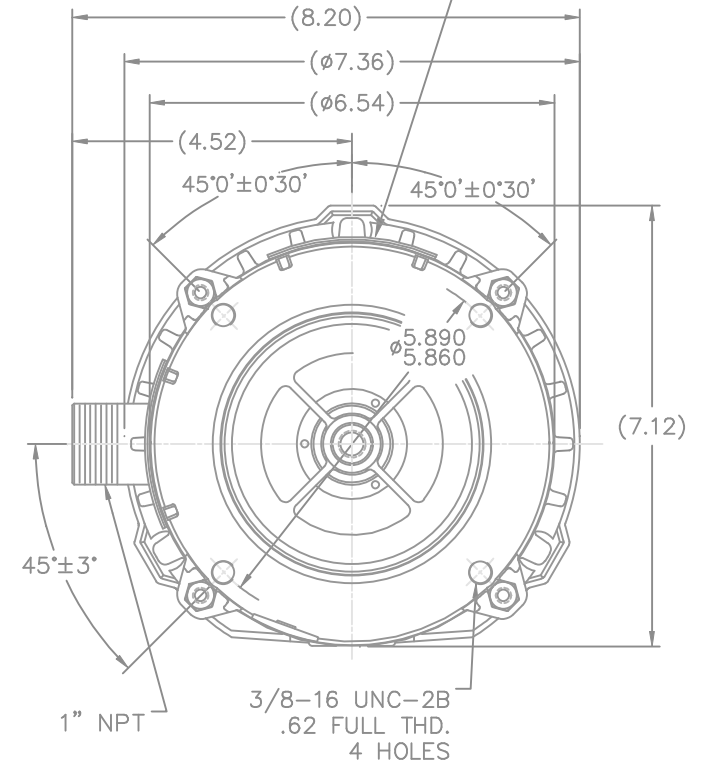
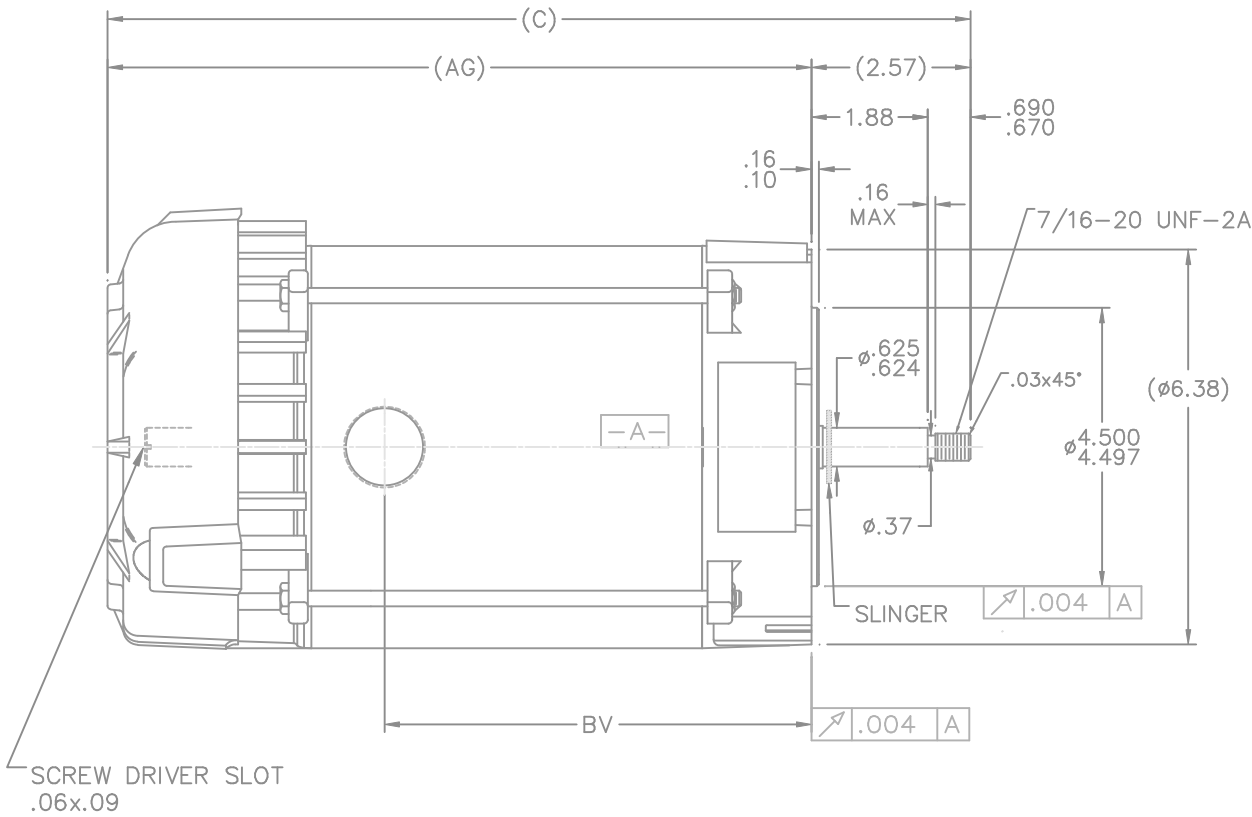
**Nameplate Specifications**

Output HP	0.50 Hp	Output KW	0.37 kW
Frequency	60 Hz	Voltage	115/208-230 V
Current	8.4/4.0-4.2 A	Speed	3450 rpm
Service Factor	1	Phase	1
Efficiency	59.5 %	Power Factor	70
Duty	Continuous	Insulation Class	B
Design Code	NO DESIGN CODE	KVA Code	N
Frame	56J	Enclosure	Explosion Proof Fan cooled
Thermal Protection	Automatic	Ambient Temperature	40 °C
Drive End Bearing Size	6205	Opp Drive End Bearing Size	6203
UL	UL Listed And CSA Certified	CSA	Y
CE	N	IP Code	54
Hazardous Location	EXP PROOF CL I GR C&D CL II GR F&G T3B		

**Technical Specifications**

Electrical Type	Capacitor Start Induction Run	Starting Method	Across The Line
Poles	2	Rotation	Selective Clockwise
Resistance Main	0 Ohms	Mounting	Round
Motor Orientation	Horizontal	Drive End Bearing	Ball
Opp Drive End Bearing	Ball	Frame Material	Rolled Steel
Shaft Type	J	Overall Length	13.95 in
Frame Length	6.31 in	Shaft Diameter	0.625 in
Shaft Extension	2.57 in	Assembly/Box Mounting	F1 ONLY
Outline Drawing	B-104213GE-631	Connection Drawing	A-102005-109-GE

NAMEPLATES TO BE READ FROM SHAFT EXT. END.



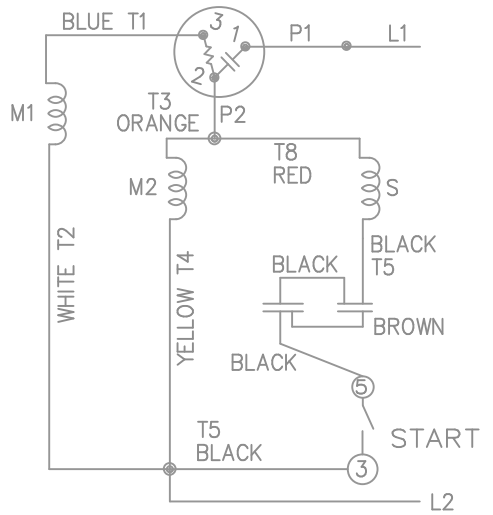
DASH	C	AG	BV
631	13.95	11.38	6.90
681	14.45	11.88	7.40
731	14.95	12.38	7.90
781	15.45	12.88	8.40
831	15.95	13.38	8.90
881	16.45	13.88	9.40
931	16.95	14.38	9.90
981	17.45	14.88	10.40

NO.		REVISION	BY & DATE	CHK	ANG	FINISH	CAD FILE	SIZE	DRAWING NO.	PAGE	OF	REV.
1		CHANGED LOGO TO REGAL BELOIT	TAT 09-07-2005	ML	.XXXX	±.0005						
THIS DRAWING IN DESIGN AND DETAIL IS OUR PROPERTY AND MUST NOT BE USED EXCEPT IN CONNECTION WITH OUR WORK. ALL RIGHTS OF DESIGN AND INVENTION ARE RESERVED. THIS IS AN ELECTRONICALLY GENERATED DOCUMENT - DO NOT SCALE THIS PRINT				RFP	WP		CAD FILE 104213ge	B	104213GE	1		

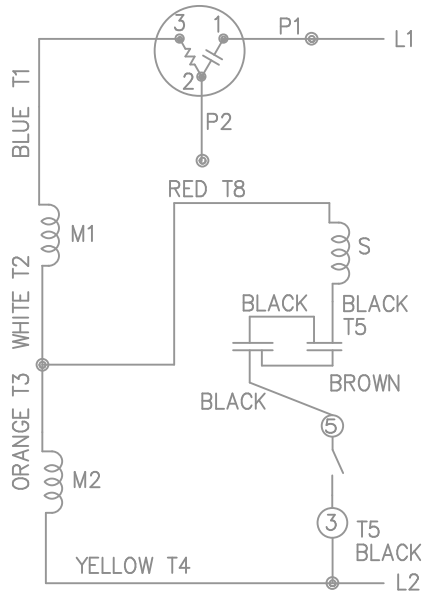


TITLE OUTLINE  
56 FR - C'FACE - XP

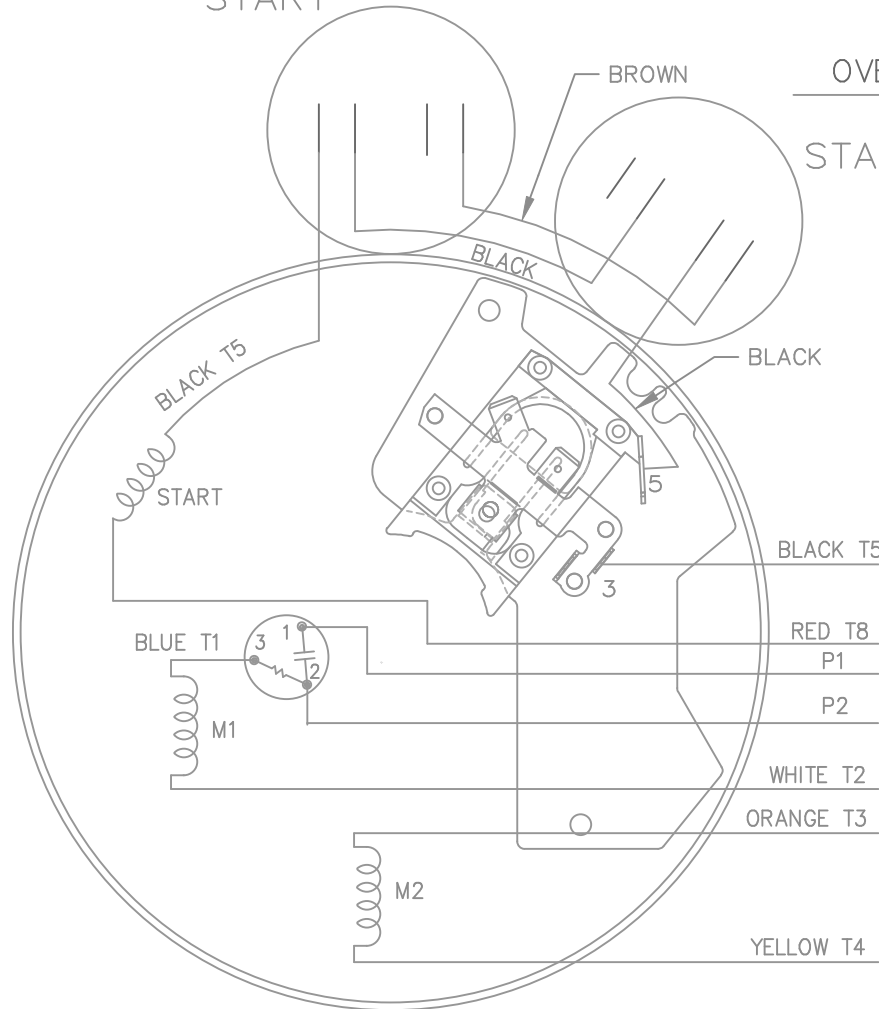
DRAWN: MKLEIST 12-17-04  
CHK: ML 01-12-05  
APPD: DRN 01-13-05  
SCALE: 1=2  
REF: FMF  
PREV:



HIGH VOLTAGE - C.C.W.



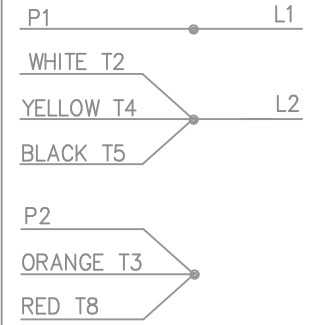
START



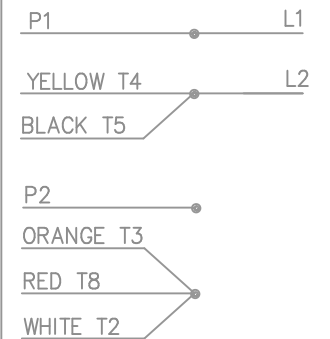
DUAL VOLTAGE  
CAPACITOR START  
OVERLOAD SELECT ROT.

START

LOW VOLT. - C.C.W. ROT.



HIGH VOLT. - C.C.W. ROT.



FOR C.W. ROTATION  
EITHER VOLTAGE  
INTERCHANGE RED(T8)  
WITH BLACK(T5) LEAD

				TOLERANCES UNLESS SPECIFIED		MARATHON ELECTRIC	DRAWN MJD 02-11-1998				
				DEC.	INCHES		CHK	ML	02-19-1998		
				.X	± -	TITLE CONNECTION DIAGRAM	APPD	DAR	02-23-1998	SCALE	5=8
2	REISSUE - CLARIFIED JUNCTION OF WHITE T2, BLACK T5 AND YELLOW T4 ON THE LOW VOLTAGE DIAGRAM	MSG 06-26-2007	ST	.XXX	± -			REF			
1	NEW DRAWING MU18593	MJD 02-23-1998		.XXXX	± -	MAT'L.	FMF				
NO.	REVISION	BY & DATE	CHK	ANG	± -	FINISH	PREV				
THIS DRAWING IN DESIGN AND DETAIL IS OUR PROPERTY AND MUST NOT BE USED EXCEPT IN CONNECTION WITH OUR WORK ALL RIGHTS OF DESIGN AND INVENTION ARE RESERVED THIS IS AN ELECTRONICALLY GENERATED DOCUMENT - DO NOT SCALE THIS PRINT				RFP		CAD FILE 102005_109	SIZE	DRAWING NO.	PAGE	OF	REV.
				DIST	WP		A	102005-109			2





**MARATHON ELECTRIC CORPORATION**  
TYPICAL PERFORMANCE CURVE for AC MOTOR

Customer

Curve at

460

Volts

HP 0.50

PHASE 1

Model No 5KC49HN2509

60

HZ

VOLTS 115/208-230

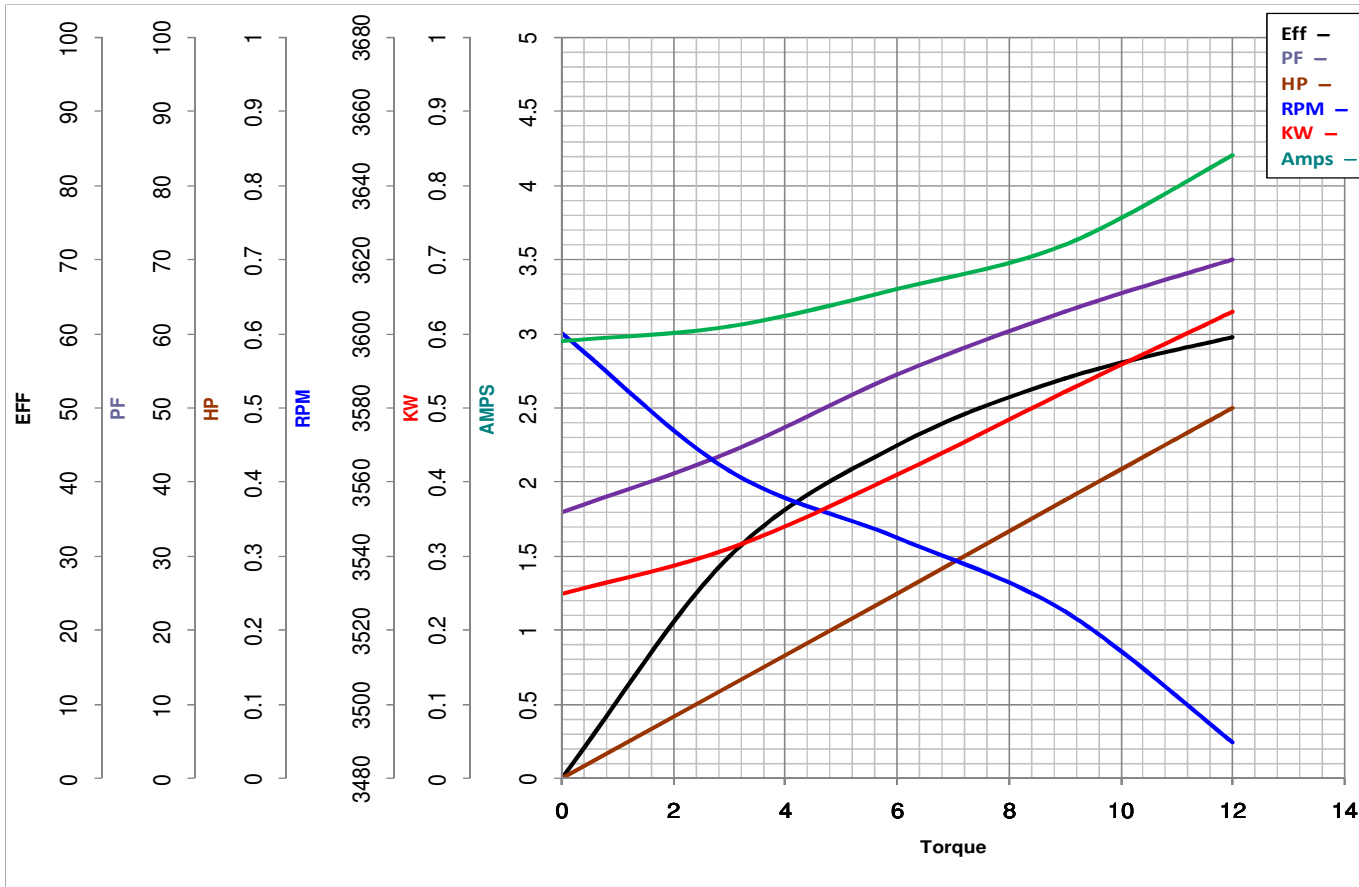
0.5

HP

Catalog No C1814

HZ 60

RPM 3450



Torque in Oz.Ft

FL TORQUE 12 Oz.Ft  
BD TORQUE 37.5 Oz.Ft  
LR TORQUE 46 Oz.Ft

FL AMPS 8.4/4-4.2  
PU TORQUE 35.2 Oz.Ft  
LR AMPS 24.8

WINDING ZC280-3

Date 1/17/2019